



Pool Power Pak® I

Models 0-1063-015, 0-1064-015, 0-1065-015, 0-1066-015
0-1063-405, 0-1064-405, 0-1065-405, 0-1066-405

Owner's Guide



PREPARATION

The numbers in parentheses refer to key numbers on the Exploded Parts illustration on page 3.

ELECTRICAL SOURCE

Models 0-1063-015, 0-1064-015, 0-1065-015,
0-1066-015 (European)

The Pool Power Pak I® requires a grounded, 3-wire, 220/240 volt - electrical receptacle protected by a Ground Fault Circuit Interrupter (GFCI). Be sure the receptacle is not overloaded with other appliances. The Pool Power Pak I® is supplied with a 3 meter, 3-wire electrical cord and 3-prong plug. DO NOT use grounding adapters. If an extension cord is used, it must be no longer than 10 meters with a three conductor, grounded outdoor type of a minimum 14 gauge. For runs greater than 10 meters total, contact a local, licensed electrical contractor. The use of an inadequately sized extension cord will void all warranties given by the motor manufacturer.

Models 0-1063-405, 0-1064-405, 0-1065-405,
0-1066-405 (United Kingdom)

The Pool Power Pak I® is supplied with a 3 meter, 3-wire electrical cord with a 3 prong, 10 amp plug that meets British standards. It requires a grounded, 3-wire, 220/240 volt electrical receptacle protected by a Ground Fault Circuit Interrupter (GFCI). DO NOT use grounding adapters. See information on Models (-015) for use of an extension cord.

STRAINER ASSEMBLY INSTALLATION

Sand, DE and Pressure Cartridge filters - The Strainer Assembly is packed with the filter. Refer to your filter Owner's Guide to learn how to install the Strainer Assembly on the Pool Power Pak I. The male hose adapter (16) provided with your Power Pak is not required when a Strainer Assembly is installed on the pump.

Skim Line Filter - Strainer Assembly is optional. If not used, then screw the male hose adaptor (16) into the threaded suction port of the pump volute (13) and tighten firmly. This adapter must be installed if no Strainer Assembly is used.

CAUTION

Always keep the water level in your pool between the water level markers on the skimmer face plate. If pump is run with water level too low, the pump seal may overheat and cause permanent damage to the pump.

Your Pool Power Pak must sit either in an optional filter/pump base, on a patio block, or on any firm surface that slightly elevates the pump off the ground. This keeps water away from the motor and prevents the vents of the Power Pak from becoming blocked which could cause the motor to overheat.

MAINTENANCE

Make sure the pump is disconnected from the electrical source before attempting any maintenance work.

LUBRICATION:

Periodically lubricate the O-Ring under the strainer cover with a NON-PETROLEUM lubricant recommended for A.B.S., Noryl and Acrylic plastics. Consult your pool dealer for lubricant selections.

Lubricate the sleeve bearing on the motor once a year per the motor manufacturer's instructions located on the motor inside the pump housing.

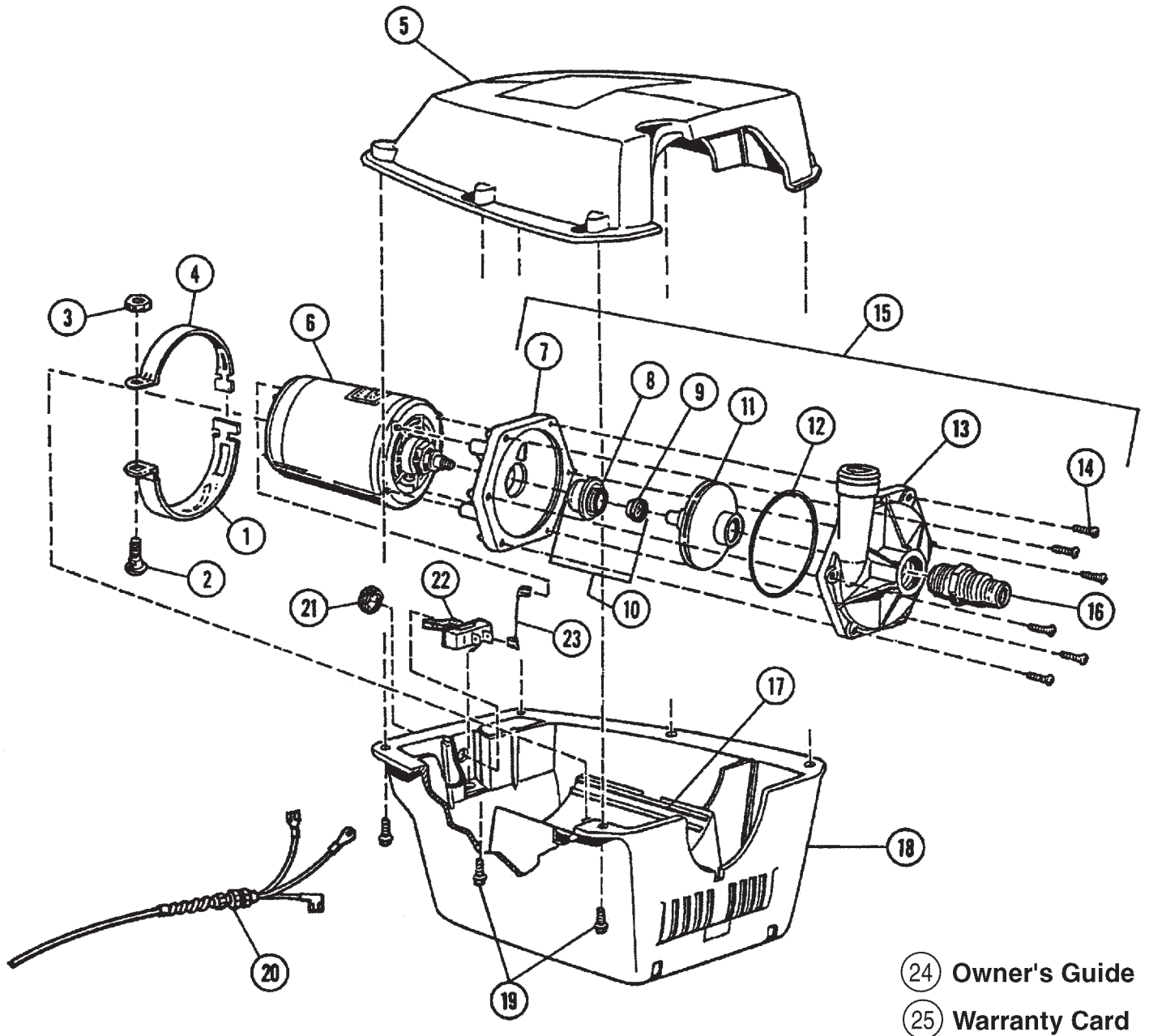
If you have any questions or require assistance, contact your Doughboy pool dealer.

IMPORTANT PUMP SAFETY

1. **DO NOT** install pump on a deck. It could fall into the water, causing severe electrical shock. Do not install on any surface at, above, or slightly below the top rail of the pool
2. **DO NOT** allow children or adults to climb, sit, or stand on the pump unit. They could easily fall. Position the filter and pump approximately 5 feet from the pool wall so they may not be used as steps by children.
3. Special rules may exist for pumps to be used in or at swimming pools, garden ponds, and similar places.

POOL POWER PAK® I, 50 Hz EXPLODED PARTS

MODELS 0-1063-015, 0-1064-015, 0-1065-015, & 0-1066-015
MODELS 0-1063-405, 0-1064-405, 0-1065-405, & 0-1066-405



POOL POWER PAK® I - 50 Hz PARTS LIST							
MODELS 0-1063-015, 0-1064-015, 0-1065-015, 0-1066-015, 0-1063-405, 0-1064-405, 0-1065-405, 0-1066-405							
ITEM	P/N	QTY	DESCRIPTION	ITEM	P/N	QTY	DESCRIPTION
1	341-1123	1	Insulating Sleeve	13	305-1010	1	Pump Volute
2	324-1018	1	1/4" - 20 x 1" Bolt	14	330-1016	6	#8 x 1" Phillips Screw
3	321-1004	1	1/4" - 20 Hex Nut	15	1121-1583	1	1/3 HP Pump Assy.
4	385-1152	2	Motor Clamp		1121-1584	1	1/2 HP Pump Assy.
5	1121-1536	1	Top Housing w/Label		1121-1585	1	3/4 HP & 1HP Pump Assy.
6	300-1031	1	Motor, 1/3 HP - 50 Hz	16	340-1778	1	Male Hose Adapter
	300-1018	1	Motor, 1/2 HP - 50 Hz	17	348-1026	2	Rubber Strip
	300-1020	1	Motor, 3/4 HP - 50 Hz	18	1104-1086	1	Bottom Housing Assembly
	300-1089	1	Motor, 1 HP - 50 Hz	19	330-1023	6	#8 x 5/8" Screw
7	1121-1582	1	Pump Faceplate Assy.	20	1100-1187	1	10' European Cord Assy.
8	308-1264	1	5/8" Pump Seal - Spring		1100-1367	1	10' United Kingdom Cord Assy.
9	308-1263	1	Pump Seal Seat - Ceramic	21	303-1110	1	Knurled Ring Nut
10	1121-1577	1	5/8" Pump Seal Set	22	303-1109	1	Switch
11	1107-1143	1	Impeller Assy., 1/3 HP	23	1100-1078	1	Switch Wire Assy.
	1107-1142	1	Impeller Assy., 1/2 HP	24	365-1807	1	Owner's Guide
	1107-1141	1	Impeller Assy., 3/4 HP & 1 HP	25	—	1	Warranty Card
12	308-1005	1	O-Ring Seal				

SERVICING SAFETY TIPS

- A. **ALWAYS TURN "OFF"** the main power switch and the Ground Fault Circuit Interrupter (GFCI) breaker switch so power is completely off before servicing your unit.
- B. **ALWAYS STOP PUMP** before you service, tighten, or adjust the pump assembly.
- C. **ALWAYS BE SURE THE GROUND UNDER YOUR FEET, AND YOUR BODY IS DRY** before you touch electrical equipment. Failure to heed this warning may cause personal injury due to severe electrical shock.
- D. **ALWAYS** have a qualified electrician service your system if electrical problems occur. This system must be serviced by a qualified electrician to insure that the electrical integrity is maintained. Failure to do so may cause personal injury due to severe electrical shock and may void the warranty.

- E. **ALWAYS** have a qualified electrician install a Ground Fault Circuit Interrupter (GFCI) breaker at the electrical service or supply panel. Follow GFCI manufacturer's operating instructions for testing. Failure to do so may cause personal injury due to severe electrical shock.

CAUTION: To reduce the risk of electrical shock, connect only to grounding type receptacles. A Ground Fault Circuit Interrupter (GFCI) must be provided.

CAUTION: To reduce the risk of electrical shock, use only Original Equipment Manufactured (OEM) replacement parts when servicing.

Change of Design: Doughboy Recreational expressly reserves the right to change or modify the design and construction of any product in due course of our manufacturing procedures, without incurring any obligation or liability to furnish or install such changes or modifications on products previously or subsequently sold.



DOUGHBOY RECREATIONAL • 10959 Jersey Blvd. • Rancho Cucamonga, CA 91730
 Visit our website at www.doughboy-pools.com