



Pool Power Pak® II

Models with Strainer Assembly-

0-1084-015, 0-1085-015, 0-1086-015, 0-1087-015
(European)

0-1084-405, 0-1085-405, 0-1086-405, 0-1087-405
(United Kingdom)

Owner's Guide



PREPARATION

The numbers in parentheses refer to key numbers on the Exploded Parts illustration on page 3.

ELECTRICAL SOURCE

Models 0-1084-015, 0-1085-015, 0-1086-015,
0-1087-015 (European)

The Pool Power Pak II® requires a grounded, 3-wire, 220/240 volt - electrical receptacle protected by a Ground Fault Circuit Interrupter (GFCI). Be sure the receptacle is not overloaded with other appliances. The Pool Power Pak II® is supplied with a 3 meter, 3-wire electrical cord and 3-prong plug. DO NOT use grounding adapters. If an extension cord is used, it must be no longer than 10 meters with a three conductor, grounded outdoor type of a minimum 14 gauge. For runs greater than 10 meters total, contact a local, licensed electrical contractor. The use of an inadequately sized extension cord will void all warranties given by the motor manufacturer.

Models 0-1084-405, 0-1085-405, 0-1086-405,
0-1087-405 (United Kingdom)

The Pool Power Pak II® is supplied with a 3 meter, 3-wire electrical cord with a 3 prong, 10 amp plug that meets British standards. It requires a grounded, 3-wire, 220/240 volt electrical receptacle protected by a Ground Fault Circuit Interrupter (GFCI). DO NOT use grounding adapters. See information on Models (-015) for use of an extension cord.

STRAINER ASSEMBLY INSTALLATION

Press down on the cover (29) while loosening the two strainer knobs (28) just enough to rotate the cover counter-clockwise until it stops. Lift off the cover. Inside the basket you will find assembly screws and instructions for assembling the Strainer to the Power Pak II. Take care to prevent cross threading. DO NOT over-tighten. The strainer should be snug and in an upright position when assembled. To replace cover, press down and rotate clockwise until slots in cover are completely under knobs. Tighten knobs until cover is fully seated.

CAUTION

Always keep the water level in your pool between the water level markers on the skimmer face plate. If pump is run with water level too low, the pump seal may overheat and cause permanent damage to the pump.

Your Pool Power Pak must sit either in an optional filter/pump base, on a patio block, or on any firm surface that slightly elevates the pump off the ground. This keeps water away from the motor and prevents the vents of the Power Pak from becoming blocked which could cause the motor to overheat.

MAINTENANCE

Make sure the pump is disconnected from the electrical source before attempting any maintenance work.

LUBRICATION:

Periodically lubricate the O-Ring under the strainer cover with a NON-PETROLEUM lubricant recommended for A.B.S., Noryl and Acrylic plastics. Consult your pool dealer for lubricant selections.

Lubricate the sleeve bearing on the motor once a year per the motor manufacturer's instructions located on the motor inside the pump housing.

If you have any questions or require assistance, contact your Doughboy pool dealer.

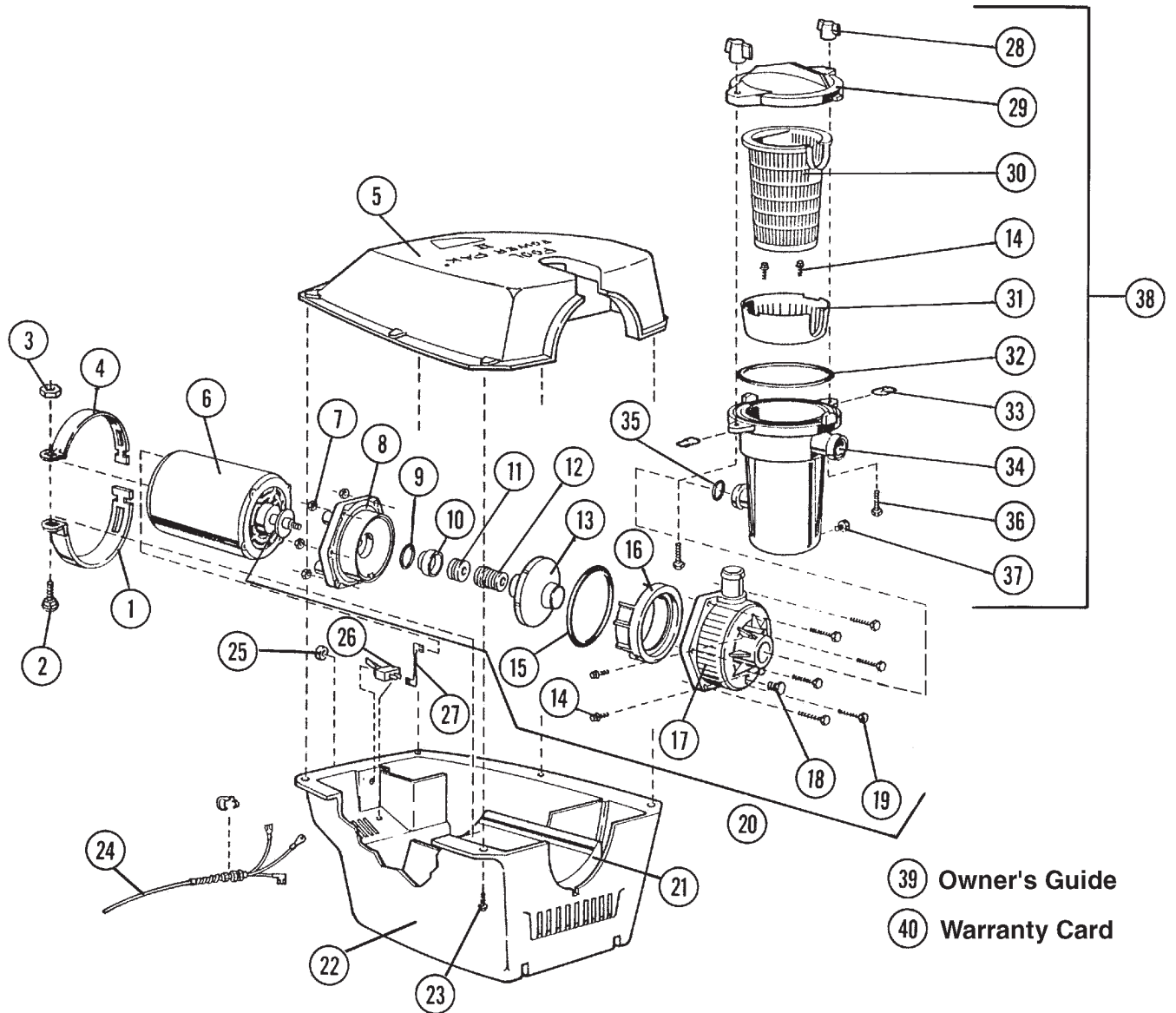
IMPORTANT PUMP SAFETY

- 1.. **DO NOT** install pump on a deck. It could fall into the water, causing severe electrical shock. Do not install on any surface at, above, or slightly below the top rail of the pool
2. **DO NOT** allow children or adults to climb, sit, or stand on the pump unit. They could easily fall. Position the filter and pump approximately 1.25 meters from the pool wall so they may not be used as steps by children.
3. Special rules may exist for pumps to be used in or at swimming pools, garden ponds, and similar places.

POOL POWER PAK® II

EXPLODED PARTS

MODELS 0-1084-015, 0-1085-015, 0-1086-015 & 0-1087-015
 MODELS 0-1084-405, 0-1085-405, 0-1086-405 & 0-1087-405



POOL POWER PAK® II - 50 HZ PARTS LIST							
MODELS 0-1084-015, 0-1085-015, 0-1086-015, 0-1087-015, 0-1084-405, 0-1085-405, 0-1086-405, 0-1087-405							
ITEM	P/N	QTY	DESCRIPTION	ITEM	P/N	QTY	DESCRIPTION
1	341-1123	1	Insulating Sleeve	20	1121-1364	1	1/2 HP Pump Assembly
2	324-1018	1	1/4" - 20 x 1" Bolt		1121-1365	1	3/4 HP & 1 HP Pump Assembly
3	321-1004	1	1/4" - 20 Hex Nut		1121-1507	1	1-1.2 HP Pump Assembly
4	385-1152	2	Motor Clamp	21	348-1026	2	Rubber Strip
5	1121-1549	1	Top Housing w/Label	22	1104-1086	1	Bottom Housing Assy.
6	300-1029	1	Motor, 1/2 HP with Slinger, 50 Hz	23	330-1023	6	#8 x 5/8" Screw
	300-1030	1	Motor, 3/4 HP with Slinger, 50 Hz	24	1100-1187	1	10' European Cord Assy.
	300-1042	1	Motor, 1 HP with Slinger, 50 Hz		1100-1367	1	10' UK Cord Assy.
	300-1103	1	Motor, 1-1/2 HP with Slinger, 50 Hz	25	303-1110	1	Knurled Ring Nut
7	321-1027	6	#10-24 Kep Nut	26	303-1109	1	Switch
8	1128-1026	1	Pump Backplate Assy.	27	1100-1078	1	Switch Wire Assy.
9	308-1040	1	O-Ring, 1.29 x .103 Wall	28	340-1215	2	Strainer Knob
10	305-1020	1	Insulator, Ceramic Mating Ring	29	1121-1437	1	Strainer Cover w/Decal
11	1128-1030	1	Ceramic Mating Ring & O-Ring Assy.	30	1300-1001	1	Strainer Basket Assy.
12	306-1006	1	Shaft Seal, 5/8" Dia.	31	340-1216	1	Anti-Syphon Rotor
13	1107-1387	1	Impeller Assembly, 1/2 HP	32	308-1167	1	Strainer Gasket
	1107-1388	1	Impeller Assembly, 3/4 HP & 1HP	33	376-1011	2	Clip, Strainer Body Bolt
	1107-1547	1	Impeller Assembly, 1-1/2 HP	34	340-1213	1	Strainer Body
14	330-1027	4	#8 x 1/2" Screw	35	308-1046	1	O-Ring, 1.609 x .139 Wall
15	308-1099	1	O-Ring, 5.734 x .139 Wall	36	324-1004	2	3/8"-16 x 1-1/2" Bolt
16	340-1812	1	Pump Volute	37	340-1218	1	1/4" Pipe Plug
17	340-1813	1	Pump Housing	38	1300-1013	1	Strainer Assembly
18	340-1218	1	1/4" Pipe Plug	39	365-1782	1	Owner's Guide
19	330-1050	6	#10-24 x 1 1/4" Screw	40	—	1	Warranty Card

SERVICING SAFETY TIPS

- A. **ALWAYS TURN "OFF"** the main power switch and the Ground Fault Circuit Interrupter (GFCI) breaker switch so power is completely off before servicing your unit.
- B. **ALWAYS STOP PUMP** before you service, tighten, or adjust the pump assembly.
- C. **ALWAYS BE SURE THE GROUND UNDER YOUR FEET AND YOUR BODY IS DRY** before you touch electrical equipment. Failure to heed this warning may cause personal injury due to severe electrical shock.
- D. **ALWAYS** have a qualified electrician service your system if electrical problems occur. This system must be serviced by a qualified electrician to insure that the electrical integrity is maintained. Failure to do so may cause personal injury due to severe electrical shock and may void the warranty.
- E. **ALWAYS** have a qualified electrician install a Ground Fault Circuit Interrupter (GFCI) breaker at the electrical service or supply panel. Follow GFCI manufacturer's operating instructions for testing. Failure to do so may cause personal injury due to severe electrical shock.

CAUTION: To reduce the risk of electrical shock, connect only to grounding type receptacles. A Ground Fault Circuit Interrupter (GFCI) must be provided.

CAUTION: To reduce the risk of electrical shock, use only Original Equipment Manufactured (OEM) replacement parts when servicing.

Change of Design: Doughboy Recreational expressly reserves the right to change or modify the design and construction of any product in due course of our manufacturing procedures, without incurring any obligation or liability to furnish or install such changes or modifications on products previously or subsequently sold.



"the original portable pool"
doughboy®

DOUGHBOY RECREATIONAL • 10959 JERSEY BLVD. • RANCHO CUCAMONGA, CA 91730
 Visit our website at: www.doughboy-pools.com