



Pool Power Pak[®] III with On/Off Switch

European Models

0-1076-015 (1 HP), 0-1077-015 (1-1/2 HP)

United Kingdom Models

0-1076-405 (1 HP), 0-1077-405 (1-1/2 HP)

Owner's Guide



ELECTRICAL SOURCE
Models 0-1076-015, 0-1077-015
(European)

The Pool Power Pak III® requires a grounded, 3-wire, 220/240 volt - electrical receptacle protected by a Ground Fault Circuit Interrupter (GFCI). Be sure the receptacle is not overloaded with other appliances. The Pool Power Pak III® is supplied with a 3 meter, 3-wire electrical cord and 3-prong plug. DO NOT use grounding adapters. If an extension cord is used, it must be no longer than 10 meters with a three conductor, grounded outdoor type of a minimum 14 gauge. For runs greater than 10 meters total, contact a local, licensed electrical contractor. The use of an inadequately sized extension cord will void all warranties given by the motor manufacturer.

Models 0-1076-405, 0-1077-405
(United Kingdom)

The Pool Power Pak III® is supplied with a 3 meter, 3-wire electrical cord with a 3-prong, 10 amp plug that meets British standards. It requires a grounded, 3-wire 220/240 volt electrical receptacle protected by a Ground Fault Circuit Interrupter (GFCI). DO NOT use grounding adapters. See information on Models (-015) for use of an extension cord.

IMPORTANT SAFETY INSTRUCTIONS

When installing and using this electrical equipment, basic safety precautions should always be followed, including the following:

1. READ AND FOLLOW ALL INSTRUCTIONS.
2. WARNING — to reduce the risk of injury, do not permit children to use this product unless they are closely supervised at all times.
3. WARNING — Risk of Electric Shock. Connect only to a grounding type receptacle protected by a Ground Fault Circuit Interrupter (GFCI). Contact a qualified electrician if you cannot verify that the receptacle is protected by a GFCI.
4. Do not bury cord. Locate cord to minimize abuse from lawn mowers, hedge trimmers and other equipment.
5. WARNING — To reduce the risk of electric shock, replace damaged cord immediately.
6. WARNING — To reduce the risk of electric shock, do not use extension cord to connect unit to electric supply; provide a properly located outlet.
7. Special rules may exist for pumps to be used in or at swimming pools, garden ponds, and similar places.

CAUTION

1. DO NOT install the pump on a deck, it could fall into the water, causing severe electrical shock. Do not install on any surface at, above, or slightly below the top rail of the pool.
2. DO NOT allow children or adults to climb, sit, or stand on the pump unit. They could easily fall. Position the filter and pump approximately 1.25 meters from the pool wall so they may not be used as steps by children.
3. Always keep the water level in your pool between the water level markers on the skimmer face plate. If the pump is run with water level too low, the pump seal may overheat and cause permanent damage to the pump.
4. Your Pool Power Pak must sit either in an optional filter/pump base, on a patio block, or on any firm surface that slightly elevates the pump off the ground. This keeps water away from the motor and prevents the vents of the Power Pak from becoming blocked, which could cause the motor to overheat.

SUCTION AND DISCHARGE CONNECTIONS

Your Pool Power Pak is provided with two union socket connections for hard plumbing to 38mm PVC pipe or flex pipe and two union hose adaptors for connecting to 38mm inside diameter hose. Install o-ring into groove on end of the body outlets, then position either the union socket or hose adaptor and secure in place with the union nut.



NOTE: Use ABS to PVC solvent cement when using the union socket connections for hard plumbing installations. Refer to the solvent manufacturer's instructions for preparations of socket and pipe end and solvent welding of the joints.

SHUT-OFF VALVE

Your Pool Power Pak features a shut-off valve in the pump suction inlet. This feature allows you to shut off the flow from the skimmer when removing strainer basket for cleaning or servicing the pump.

PICKUP PHOTO
SAME POSITION
AS PREVIOUS 365-1720

Rotate valve knob counter-clockwise until it stops (open position) for normal pumping operation.

PICKUP PHOTO
SAME POSITION
AS PREVIOUS 365-1720

Rotate valve knob clockwise until it stops (closed position) when cleaning out the strainer basket or servicing the pump.

MAINTENANCE

Make sure the pump is disconnected from the electrical source before attempting any maintenance work.

LUBRICATION

Periodically lubricate the O-Ring under the strainer cover with a NON-PETROLEUM lubricant recommended for A.B.S. and Lexan plastics. Consult your pool dealer for lubricant selections.

If you have any questions or require assistance, contact your Doughboy pool dealer.

SERVICING SAFETY TIPS

- A. **ALWAYS TURN "OFF"** the main power switch and the Ground Fault Circuit Interrupter (GFCI) breaker switch so power is completely off before servicing your unit.
- B. **ALWAYS BE SURE THE GROUND UNDER YOUR FEET AND YOUR BODY IS DRY** before you touch electrical equipment. Failure to heed this warning may cause personal injury due to severe electrical shock.
- C. **ALWAYS** have a qualified electrician service your

system if electrical problems occur. This system must be serviced by a qualified electrician to insure that the electrical integrity is maintained. Failure to do so may cause personal injury due to severe electrical shock.

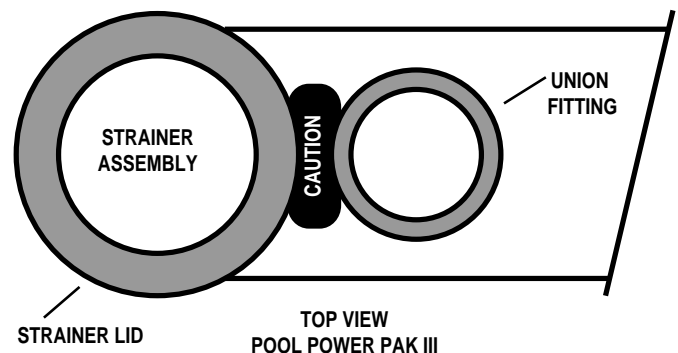
- D. **ALWAYS** have a qualified electrician install a Ground Fault Circuit Interrupter (GFCI) breaker at the electrical service or supply panel. Follow GFCI manufacturer's operating instructions for testing. Failure to do so may cause personal injury due to severe electrical shock.

CAUTION: To reduce the risk of electrical shock, connect only to grounding type receptacles. A Ground Fault Circuit Interrupter (GFCI) must be provided in accordance with local codes or ordinances.

CAUTION: To reduce the risk of electrical shock, use only Original Equipment Manufactured (OEM) replacement parts when servicing.

CAUTION

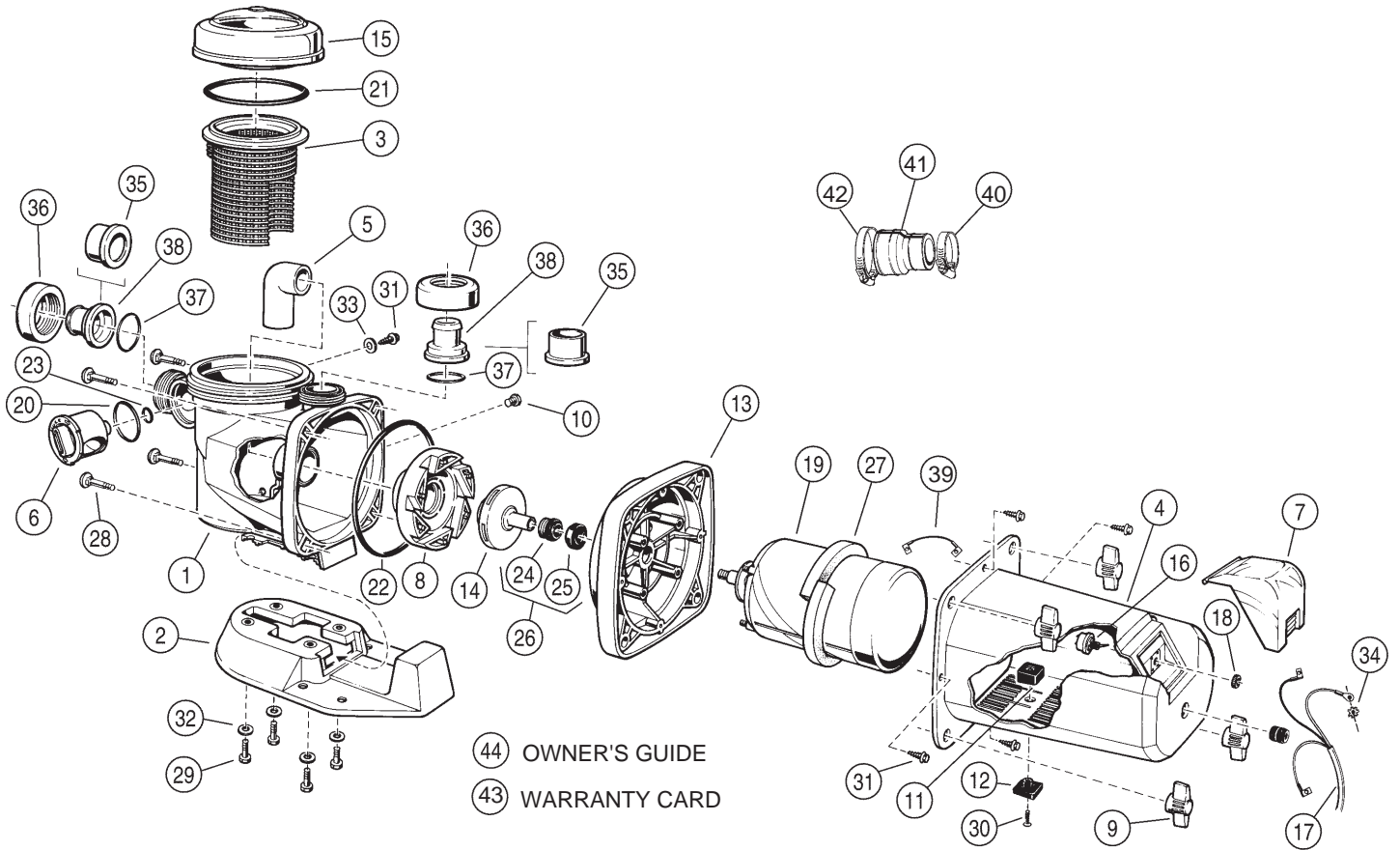
Fingers can become wedged where Strainer Lid and Union Fitting intersect. Please use caution when removing the Strainer Lid.



POOL POWER PAK III® With On/Off Switch EXPLODED VIEW

Models: 0-1076-015 (1 HP), 0-1077-015 (1-1/2 HP)

Models: 0-1076-405 (1 HP), 0-1077-405 (1-1/2 HP)



44 OWNER'S GUIDE
43 WARRANTY CARD

ITEM	P/N	QTY	DESCRIPTION	ITEM	P/N	QTY	DESCRIPTION
1	1121-1553	1	Strainer Housing w/Suction Tube	23	308-1009	1	O-Ring - .487 I.D.
2	1121-1496	1	Pump Base	24	308-1202	1	3/4" Shaft Seal
3	340-1988	1	Strainer Basket	25	308-1231	1	3/4" Pump Seal Seat
4	1121-1558	1	Motor Housing	26	1121-1495	1	3/4" Pump Seal Set
5	—	1	Elbow Suction Tube (Part of 1121-1553)	27	310-1054	1	Foam Baffle
6	340-1996	1	Valve Shut-off Knob	28	330-1239	4	3/8-16 x 2-1/2" Carriage Bolt
7	340-2004	1	Timer Cover	29	330-1219	4	5/16-18 x 1" Bolt
8	340-1991	1	Diffuser	30	330-1240	1	#10-24 x 1" Screw
9	340-1215	4	Strainer Knob	31	330-1241	5	#10 x 5/8" Screw
10	340-1218	1	1/4" Pipe Plug	32	327-1020	4	5/16" Flat Washer
11	1121-1497	1	Motor Housing Bumper - Top	33	327-1063	1	#10 Flat Washer
12	340-2054	1	Motor Housing Bumper - Bottom	34	327-1036	1	#8 Ext. Tooth Lockwasher
13	1107-1555	1	Backplate	35	340-1837	2	Union Socket
14	1107-1513	1	Impellor Assembly - 1 H.P.	36	340-1835	2	Union Nut
	1107-1514	1	Impellor Assembly - 1-1/2 H.P.	37	308-1241	2	O-Ring - 1.984 I.D.
15	1107-1498	1	Strainer Lid Assembly	38	340-1969	2	Union Hose Adaptor
16	303-1109	1	Switch	39	1100-1400	1	Jumper Wire
17	1100-1397	1	Power Cord - European	40	387-1023	1	#28 Band Clamp
	1100-1396	1	Power Cord - U.K.	41	348-1036	1	Hard Plumb Adaptor
18	303-1110	1	Knurled Ring Nut	42	387-1024	1	#36 Band Clamp
19	300-1095	1	Motor - 1 H.P.	43	—	1	Warranty Card
	300-1096	1	Motor - 1-1/2 H.P.	44	365-1769	1	Owner's Guide
20	308-1227	1	O-Ring - 2.609 I.D.				
21	308-1228	1	O-Ring - 6.975 I.D.				
22	308-1229	1	O-Ring - 8.475 I.D.				

Note: Items 40, 41 & 42 are for hard plumbing 38mm PVC pipe or flex pipe to the skimmer bottom.